

ANTARCTICA: Going Places with ESP for Science

Markéta Dudová
Jana Kubrická

Language Centre, Faculty of Science
Masaryk University



Courses at the Faculty of Science

English for Life Science

English for Geology

English for Physics

English for Teachers

English for Chemistry

English for Geography

English for Mathematics

Standing on the shoulders of giants

- IMPACT project (2014-2016)
- all science specialisations involved
- language teachers paired with experts
- topic "The Brno Reservoir" (blue-green algae, pollution...)

MEZIOBOROVÁ SPOLUPRÁCE na poli přírodních věd Jazykově-přírodovědný kurz


CENTRUM
JAZYKOVÉHO
VZDĚLÁVÁNÍ
MASARYKOVA
UNIVERZITA

Sešli se Čech, Australan, geolog, matematik, lingvista, fyzik, geograf, biolog a chemik...

ne, to není vtip, ale nabídka jedinečného kurzu angličtiny, kurzu, v němž nahlédnete za horizont své úzké specializace a poznáte, jak o stejné problematice přemýšlejí lidé z různých přírodovědných oborů.

A TO NENÍ VŠECHNO!

Čeká vás sdílení informací ve virtuálním prostředí a práce s jazykovými korpusy při tvorbě abstraktů. A navíc si na závěr kurzu sami zorganizujete **vědeckou konferenci**. A jestli vás nadto zajímá, **odkud „přitékají“ problémy do Brněnské přehrady**, jaká je její budoucnost a jestli zelená voda opravdu zmizela...

... pak se v IS MU zaregistrujte do kurzu **Výběrová angličtina pro přírodovědce**, kód JA003, období jaro 2014 (výuka 2 hodiny/týden).

KONTAKT: Hana Němcová: nemcova@rect.muni.cz

TĚŠÍ SE NA VÁS: Jarmila Burianová, Eva Čoupková, Robert Helán, Dominik Heger, Věra Hranáčová, Zdeněk Hromádka, Markéta Kovaříková, Jana Kollárová, Jana Kúbrická, Hana Němcová, Tomáš Kuchovský, Petra Rozehnalová, Pavla Řezníčková a James Thomas.

Johann Gregor Mendel Station

James Ross Island

Island

Herbert

Sound



Antarctica project

- Antarctica – research topic (authentic, space for creativity)
- Geographers – Geologists – Life Scientists (within existing courses)
- Game framework – expedition (simulation)
- Series of lessons - miniconference

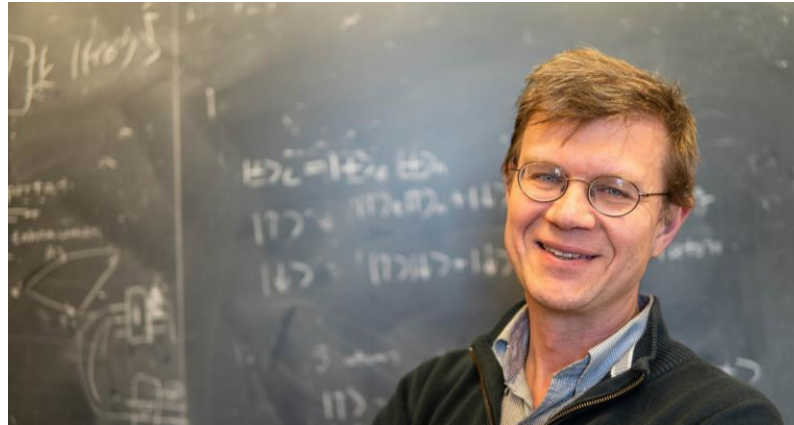


Lessons leading to the conference

Activity 1 Arctic vs Antarctic pole

- TED-Ed video to kickstart discussion
- task to design a more specialised video focusing on Antarctica
- questions for the other specialists in a discussion forum





Activity 2: Select your Antarctica team



Botanist

- would study the unique flora, including mosses, lichens, and algae.
- would contribute by identifying and cataloging plant species, studying their adaptations to extreme conditions

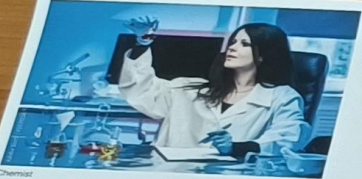


Carpenter

- would be responsible for constructing and maintaining research stations and laboratories
- would contribute by supporting research expeditions and ensuring the functionality and safety of the research station

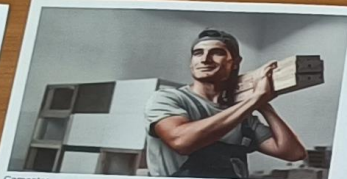


Team Antarctica



Chemist

- would analyze the composition of ice cores, snow and water samples
- would contribute by studying climate change, pollution and chemical processes in the atmosphere



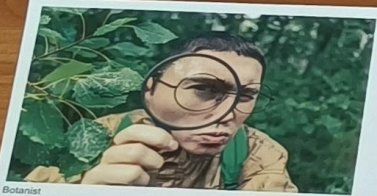
Carpenter

- would be responsible for constructing and maintaining research stations and laboratories
- would contribute by supporting research expeditions and ensuring the functionality and safety of the research station



Geologist

- would study rocks, minerals, and geological processes
- would contribute by interpreting geological data to reconstruct the continent's geological evolution



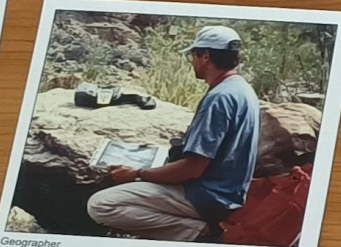
Botanist

- would study the unique flora, including mosses, lichens, and algae
- would contribute by identifying and cataloging plant species, studying their adaptations to extreme conditions



Environmental scientist

- would study the effects of climate change on Antarctic environments, including melting ice and shifting habitats
- would contribute by monitoring Antarctic ecosystems



Geographer

- would study ice sheets and glaciers
- would contribute by mapping and analyzing the region



Doctor

- would provide medical care and would be ready to respond in emergencies



Stay Home



Astrophysicist

- would analyze data from neutrino detectors stationed in Antarctica
- would collaborate with other researchers to understand how the Antarctic ice affects neutrino detection



umalait

- would make videos, documenting the scientific projects and the breathtaking landscapes
- would engage the public through interesting articles in which he would explain the discoveries, challenges and the importance of Antarctic research



Psychologist

- would study the psychological effects of isolation and extreme environmental conditions on expedition teams
- would contribute by conducting research on stress and teamwork



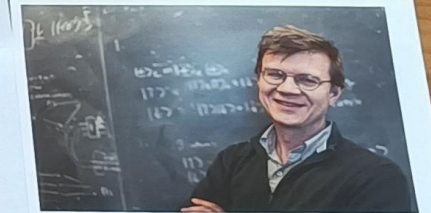
thropologist

- would study the history of human exploration and the impact of human activities on the continent
- would contribute by researching how stress influences scientific collaboration and decision-making in extreme environments



Influencer

- would use her social media to share captivating photographs and videos to her audience
- would post cool videos documenting her experiences and scientific activities



Quantum physicist

- would explore quantum phenomena in materials found in Antarctica
- would contribute by developing advanced technologies for environmental monitoring



Astrologist

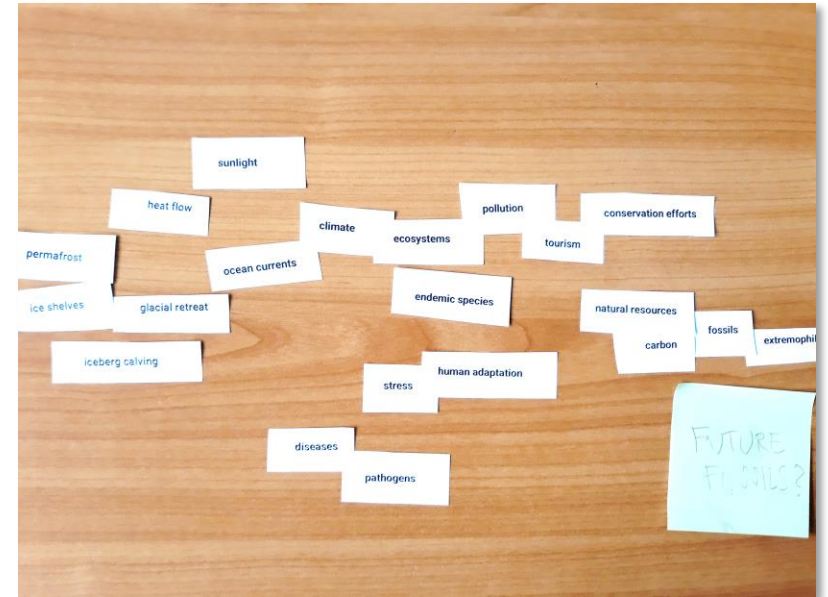
- would write weekly horoscopes and predict love lives and romantic relationships in the team
- would contribute by checking everyone's horoscopes to make sure the researchers are feeling positive and in tune with the cosmic vibes

- Visual appeal
- Sense of control, decision-making
- Community building

Lessons leading to the conference

Activity 3 Mindmap

- key words arranged by the Ss
- research question potential
- groups negotiate and agree on their research question





MINICONFERENCE

CATEGORIES

- research idea
- presentation skills: delivery

COMMITTEE

- Geographer (Czech Antarctic Research Programme)
- Botanist (Mendel University)
- Language teachers and students had a vote



FROZEN FOSSILS: DINOSAURS OF THE ANTARCTICA

- 1 End species dying out
- 2 Frozen fossils
- 3 H...

Eva Pristachová
Radek Kolačný
Jana Faifrová
Marek Bernhauser



GEOLOGY HIGHLIGHTS

How the dying out of endemic species affects the Antarctic environment

Viktória Kubove
Štěpánka Musilová
Anna Vinterová
Marta Coufalová



- 1 Endemic species dying out
- 2 Frozen fossils
- 3 Human presence

Antarctic pathogen
Unyielding organisms
Int...

BIOLOGY HIGHLIGHTS



Český antarktický výzkumný program

26. dubna · 🌐



Minulý týden proběhla na půdě [Centrum jazykového vzdělávání PŘF MUNI](#) minikonference, v rámci níž měli studentky a studenti geografických, biologických a geologických programů prezentovat návrhy antarktických výzkumných projektů. Český antarktický výzkumný program tuto akci podpořil drobnými dary pro týmy, jejichž návrhy vyhodnotili členové komise (i s naším zastoupením) jako nejlepší. Děkujeme za velmi zajímavé příspěvky a doufáme, že se někteří ze studentek či studentů rozhodnou svou další kariéru spojit právě s výzkumem v Antarktidě 😊

Antarctica
Interdisciplinary party

Wednesday 17th April, 5:00 PM
Bohúnice Campus, room C15/114

Special guests: prof. Ing. Radovan Pokorný, Ph.D. (Mendel University)
Mgr. Jakub Holuša (Masaryk University)

Programme:

- 5:00 Opening
- 5:10 How the dying out of endemic species affects the Antarctic environment
Viktória Kubové, Štěpánka Musilová, Marta Coufalová, Anna Vánerová (Life Science)
- 5:20 Frozen Fossils: Dinosaurs of Antarctica
Marek Bernhauser, Jana Faltrnová, Radek Kolačný, Eva Pristachová (Geology)
- 5:30 The influence of human presence on the Antarctic environment
Matěj Kořínek, Kateřina Pliďrová, Rozálie Uhlířová, Aneta Vavroušková (Life Science)
- 5:40 Coffee break
- 5:50 Unyielding organisms of Antarctica
Marek Joun, David Kolačný, Petřa Skubáková, Adam Světek (Geology)



Lessons learned

- Miniconference as a highlight
- Ss get in touch early on
- External experts
- Allow smaller groups



Thank you for your attention

